



Vinod Kumar
Property Advisor
9010030000

www.advisoryvinod.com

PROPOSED LANDUSE AND ROAD NETWORK FOR WARGAL MANDAL MEDAK DISTRICT

APPROVED BY GOVERNMENT USE, D.2/M/NO.30, MAADU (1) DEPARTMENT DATED 24.01.2019

LEGEND

REFERENCE

- HMDA BOUNDARY
- ERSTWHILE HUDA BOUNDARY
- ERSTWHILE HUDA BOUNDARY
- ORR GC BOUNDARY
- DISTRICT BOUNDARY
- MANDAL BOUNDARY
- VILLAGE BOUNDARY
- CANTONMENT BOUNDARY
- RAILWAY LINE
- NATIONAL HIGHWAYS
- STATE HIGHWAYS
- OUTER RING ROAD
- MAJOR ROADS
- RURAL ROADS
- KACHA ROADS
- TANK/BLUND
- DRAINAGE LINE

PROPOSED LANDUSE ZONING

- ▨ RESIDENTIAL USE ZONE-1 (R1)
- ▨ RESIDENTIAL USE ZONE-2 (R2)
- ▨ RESIDENTIAL USE ZONE-3 (R3)
- ▨ RESIDENTIAL USE ZONE-4 (R4)
- ▨ SETTLEMENTS
- ▨ I/PER-URBAN USE ZONE
- ▨ II/COMMERCIAL USE ZONE
- ▨ III/COMMERCIAL USE ZONE
- ▨ IV/COMMERCIAL USE ZONE
- ▨ V/PUBLIC AND SEMI-PUBLIC FACILITIES AND UTILITIES USE ZONE
- ▨ VI/MULTI USE ZONE
- ▨ VII/MULTI USE ZONE
- ▨ VIII/RECREATION AND OPEN SPACE USE ZONE
- ▨ IX/FOREST
- ▨ X/SPECIAL RESERVATIONS
- ▨ XI/CONSERVATION (AGRICULTURE)
- ▨ XII/TRAFFIC AND TRANSPORTATION

Scale 1:20,000

APC, HMDA

PD, HMDA

Planning Consultant, HMDA

Director, HMDA

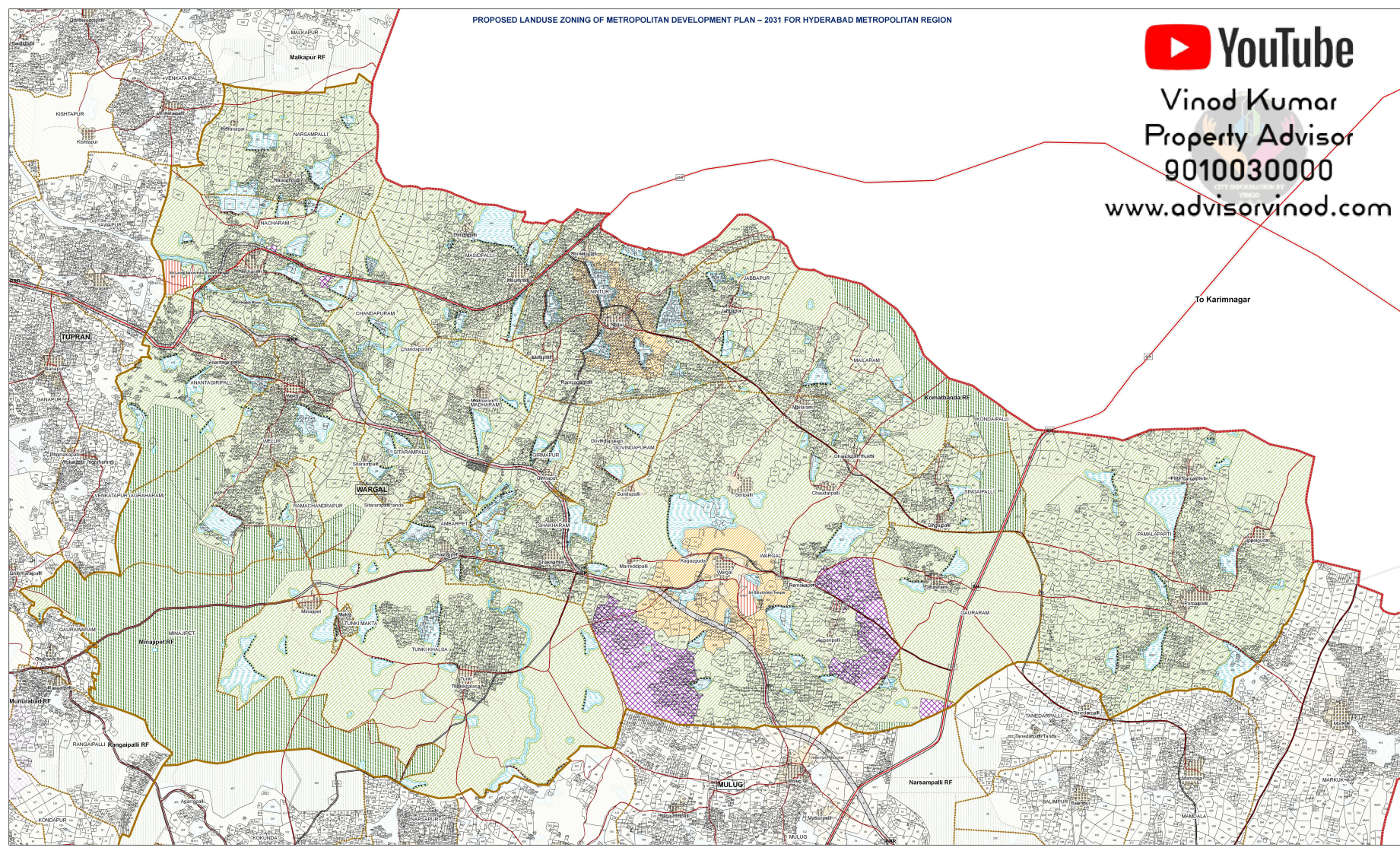
Senior Urban Planning Consultant, HMDA

Metropolitan Development Authority (HMDA)

SCALE 1:20,000

LOCATION MAP

HYDRABAD METROPOLITAN DEVELOPMENT AUTHORITY (HMDA)



HYDRABAD METROPOLITAN DEVELOPMENT AUTHORITY (HMDA)

Street no: -38
Street size: 34' x 40'